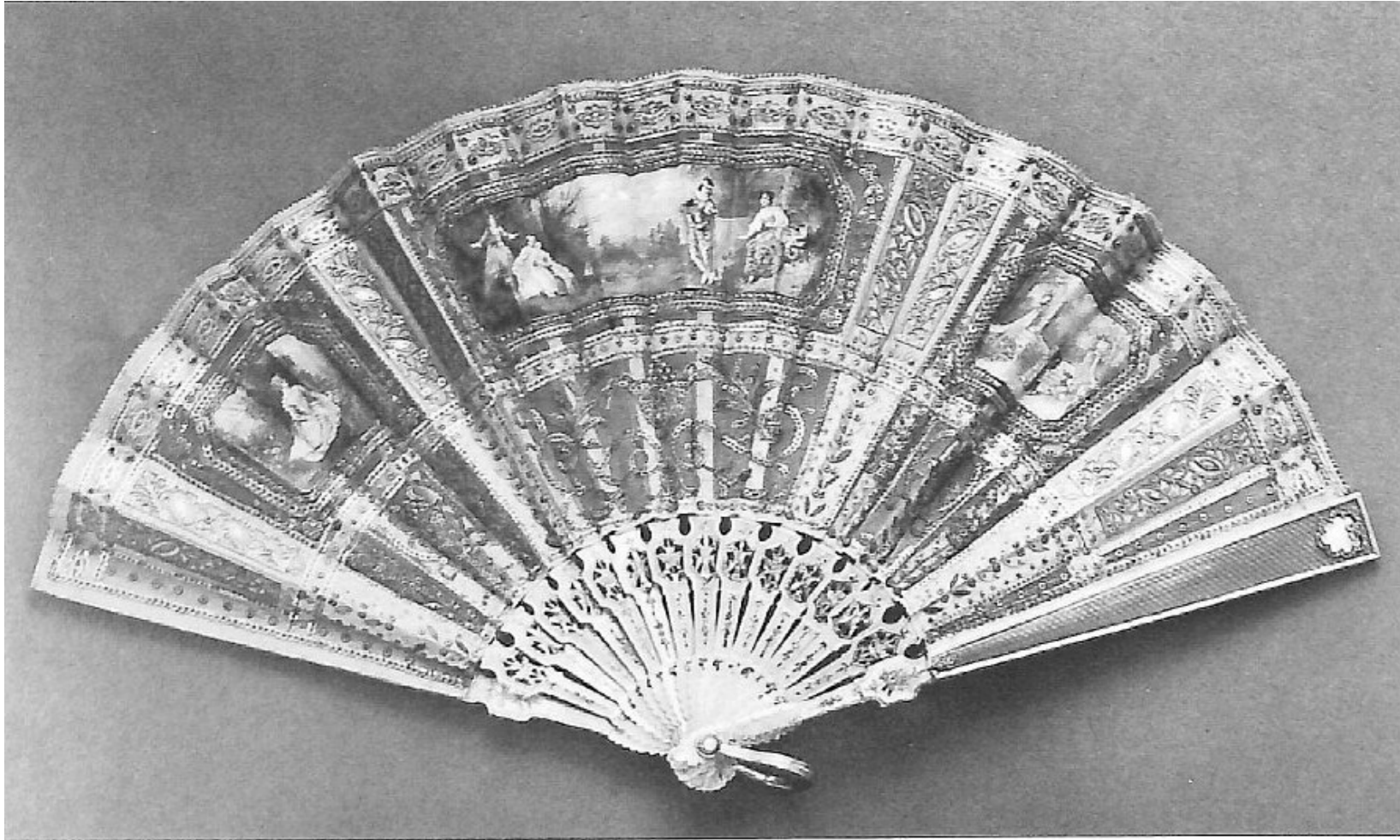


# Fabergé Fan Treasure Hunt

## January 2015

- Fans with Fabergé guards, sticks, sometimes contained in original Fabergé presentation cases, and made prior to 1917, are quite rare. More than 30 extant fans have been found in private and museum collections. An even dozen of these fans are in the Artie and Dorothy McFerrin Collection on view at the Houston Museum of Natural in Texas. Six of them are described in detail in “The Art of the Fan in the McFerrin Collection”, *FANA* [Fan Association of North America] *Journal*, Fall 2013, 4-11.
- Christel McCanless, founding editor of the *Fabergé Research Newsletter*, is searching for 23 additional Fabergé fans and information about their leaf artists perhaps known from photographs, auction catalogs, books, and/or original Fabergé design sketches.
- Fan and Fabergé enthusiasts are invited to join the hunt! Contact: [christel@fabergeresearch.com](mailto:christel@fabergeresearch.com)

(2) Courting scene, guard and sticks by Fabergé workmaster Mikhail Perkhin, owned by Charlotte of Mecklinburg-Schwerin, rose pink with pale blue cartouche, 8 ¼" (21 cm)

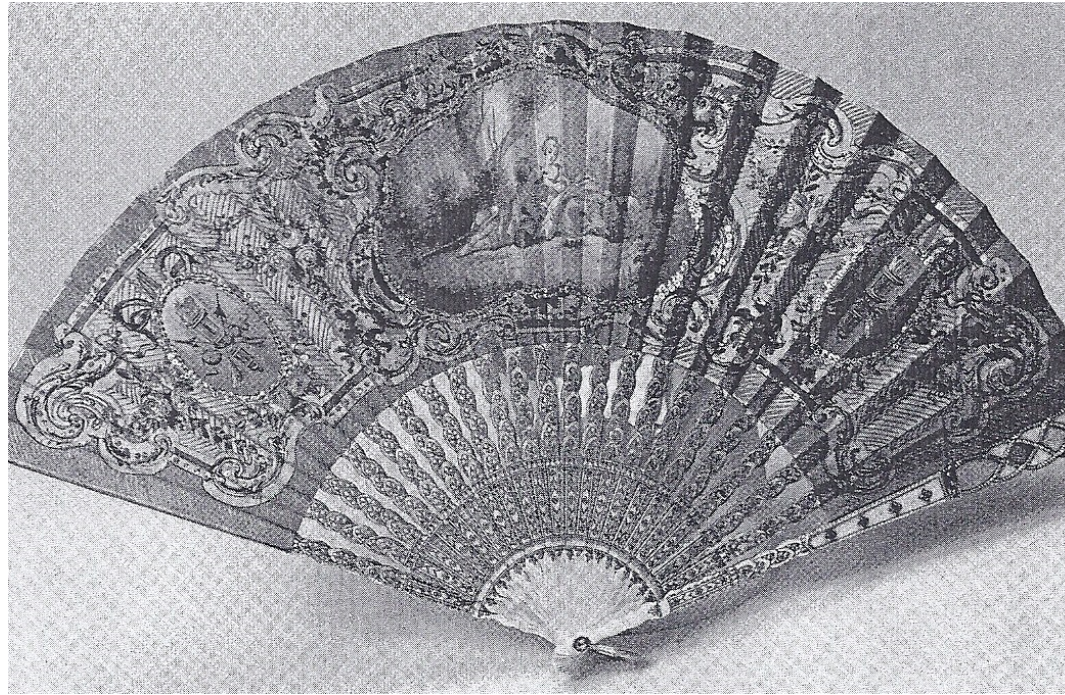


(3) Linen, ivory sticks, tiara (?) or crown over a monogram "A", guard and sticks by Fabergé workmaster Henrik Wigström, stock number 17521, indistinct signature, with original box





(4) Silk leaf with an amatory scene in the style of French Rococo painter François Boucher (1703-1770), ivory sticks, Fabergé workmaster Mikhail Perkhin, quiver in Louis XV style, 10 ¼" (26 cm), original box with St. Petersburg & Moscow stamp





(5) Ebony with little bows, Fabergé workmaster August Hollming, leaf artist Reyor (23.5 or 21.7 cm), over and under central painting HH (Cyrillic NN) ornament (?), Nationalmuseum catalog says owner's mark, original box with St. Petersburg/Moscow/Odessa stamp



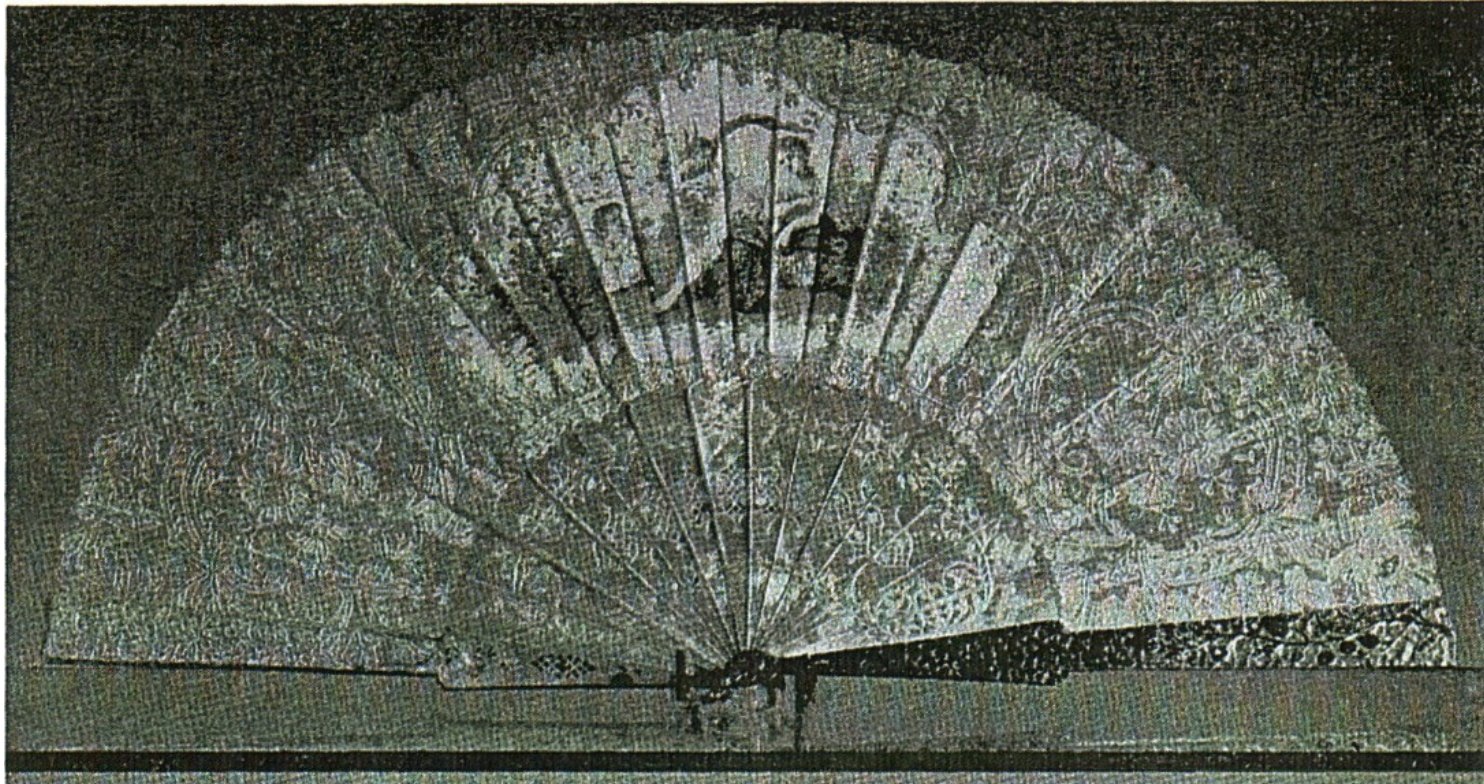
40 Faltfächer, Kat. Nr. 176  
Ebenholz, Horn, Seide, Gold, Email, Olivine / B 38,5 cm

(6) Provenance: Charlotte Duchess of Mecklenburg-Schwerin,  
Fabergé workmaster Henrik Wigström,  
Louis XVI style (20 cm)





(15) Leaf artist L. Topine, Fabergé workmaster  
August (active 1857-1903) or Albert Holmström (active 1903-1917),  
or August Hollming?



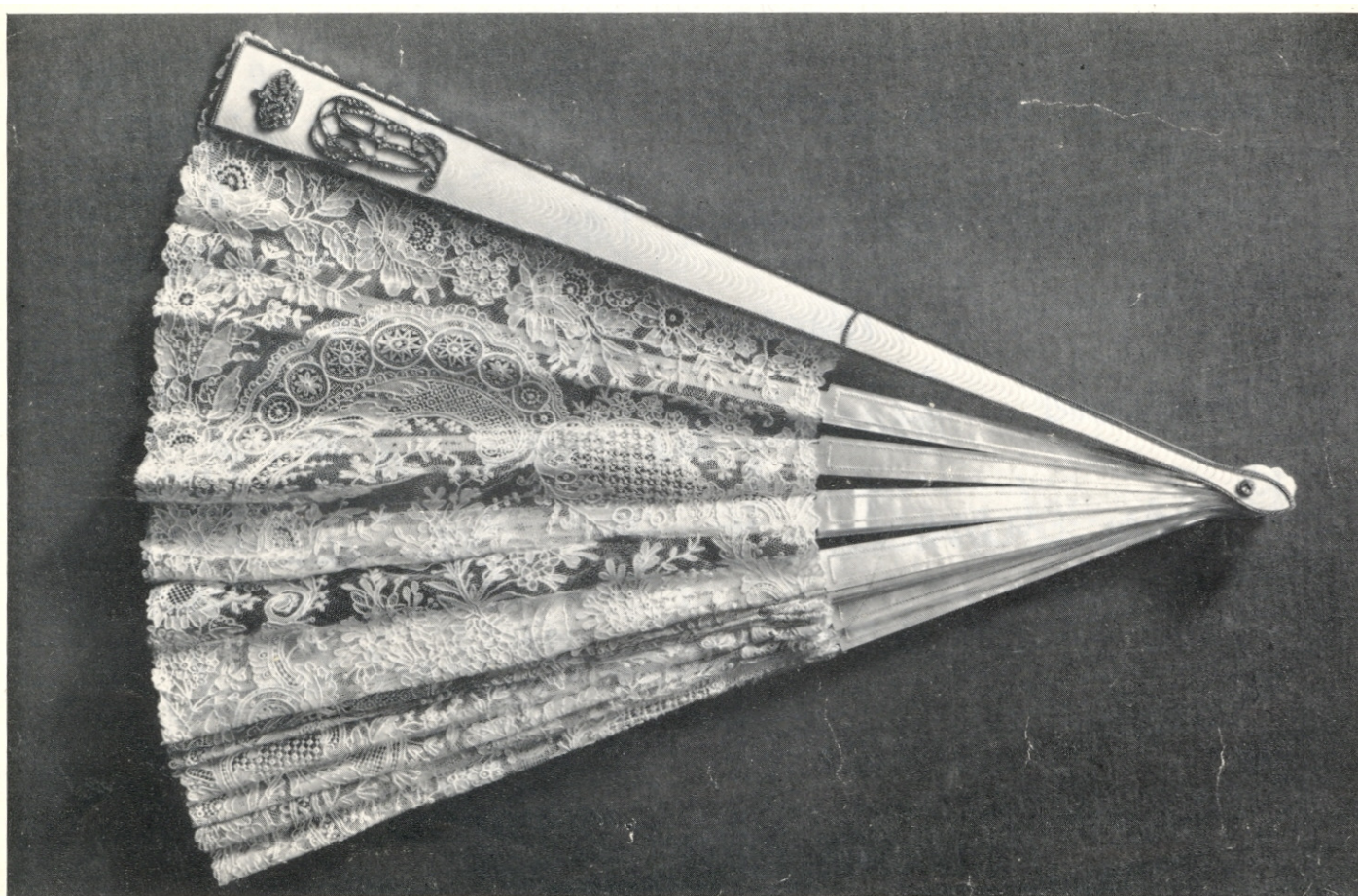


(16) Fabergé workmaster Henrik Wigström (active 1903-1917)



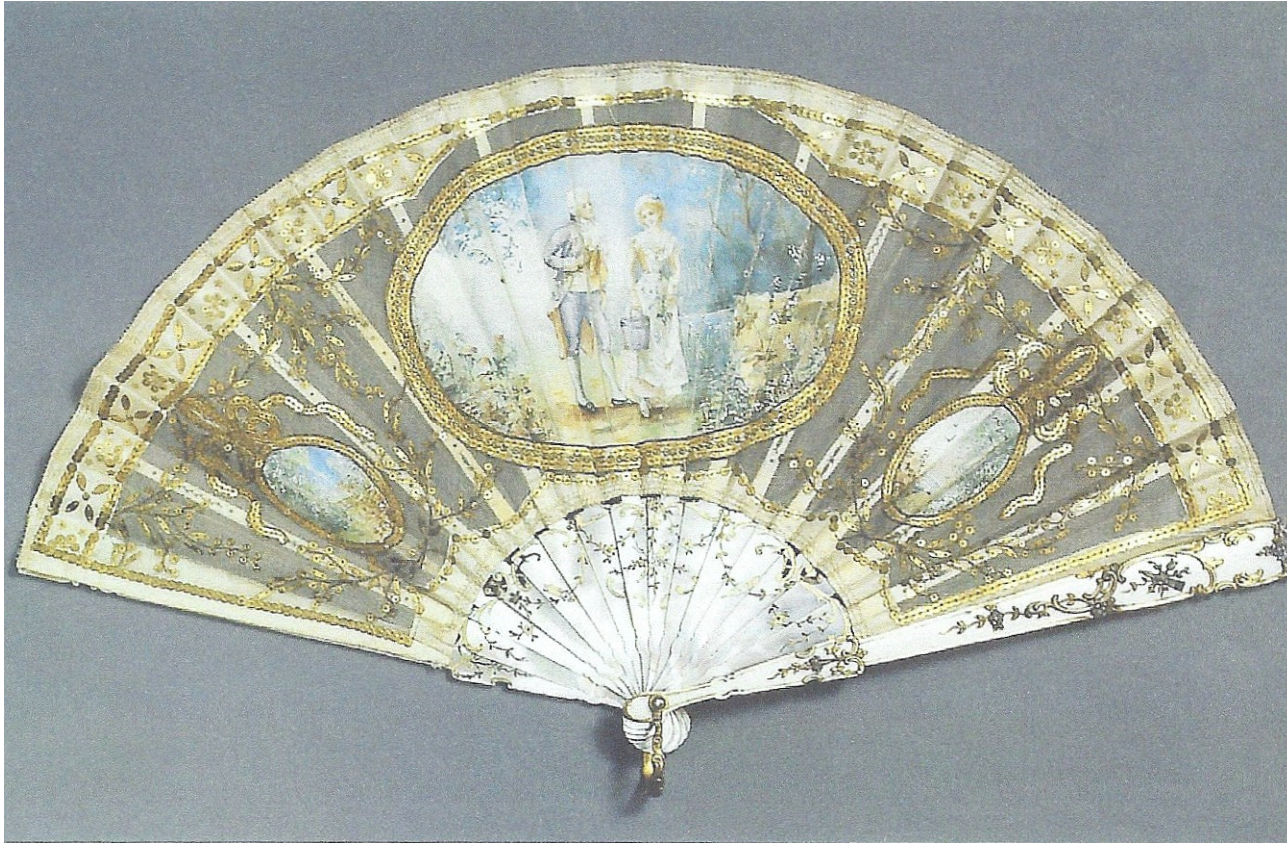
394

(17) Provenance: Demidoff, monogram with a crown,  
Fabergé workmaster Henrik Wigström (Wartski Archives)



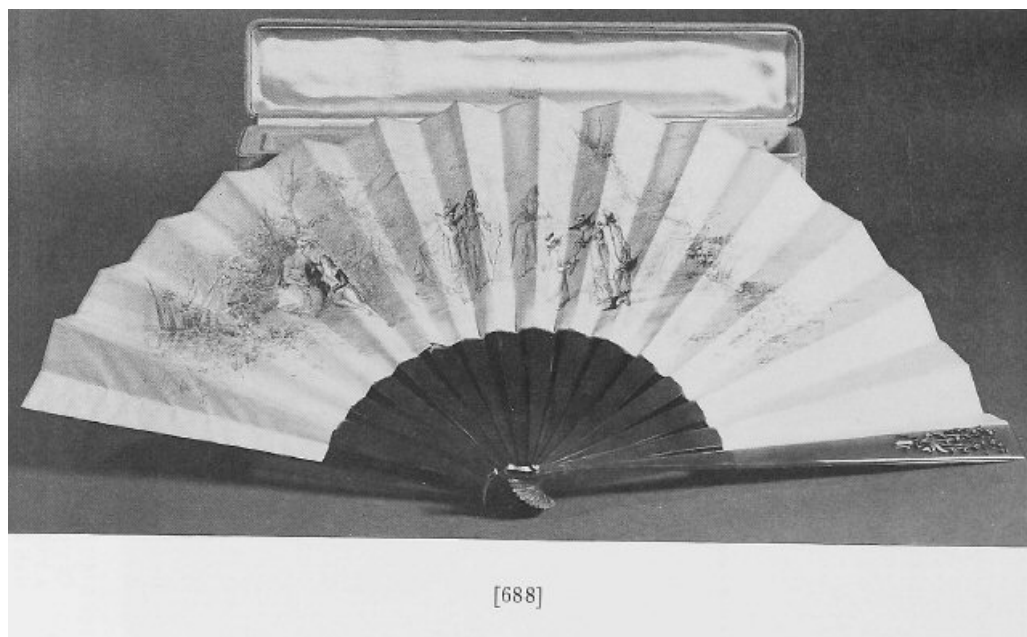


(19) Courting couple in 18<sup>th</sup> century dress. Hammer catalog (ca. 1941)  
attributed to artist Ivan Kubenin (2002, signature now illegible).  
Gift from Tsar Nicholas II to Madame Fegner (?),  
Fabergé workmaster Henrik Wigström



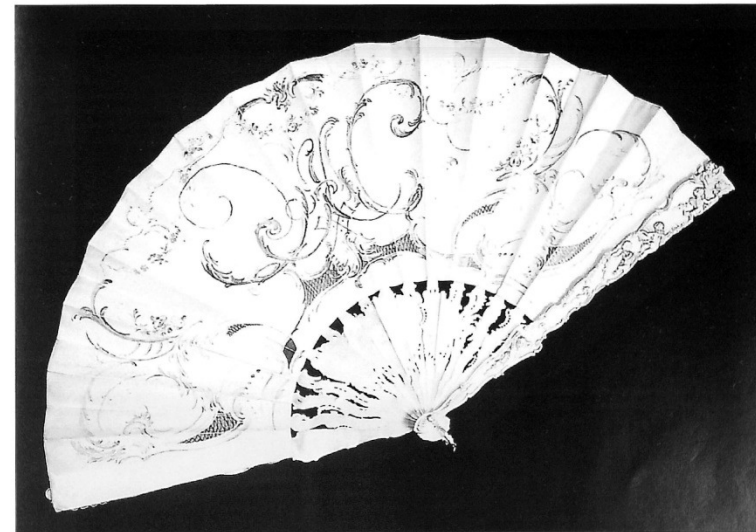


(31) Leaf artist B. Renard, tortoise shell,  
Fabergé workmaster Mikhail Perkhin

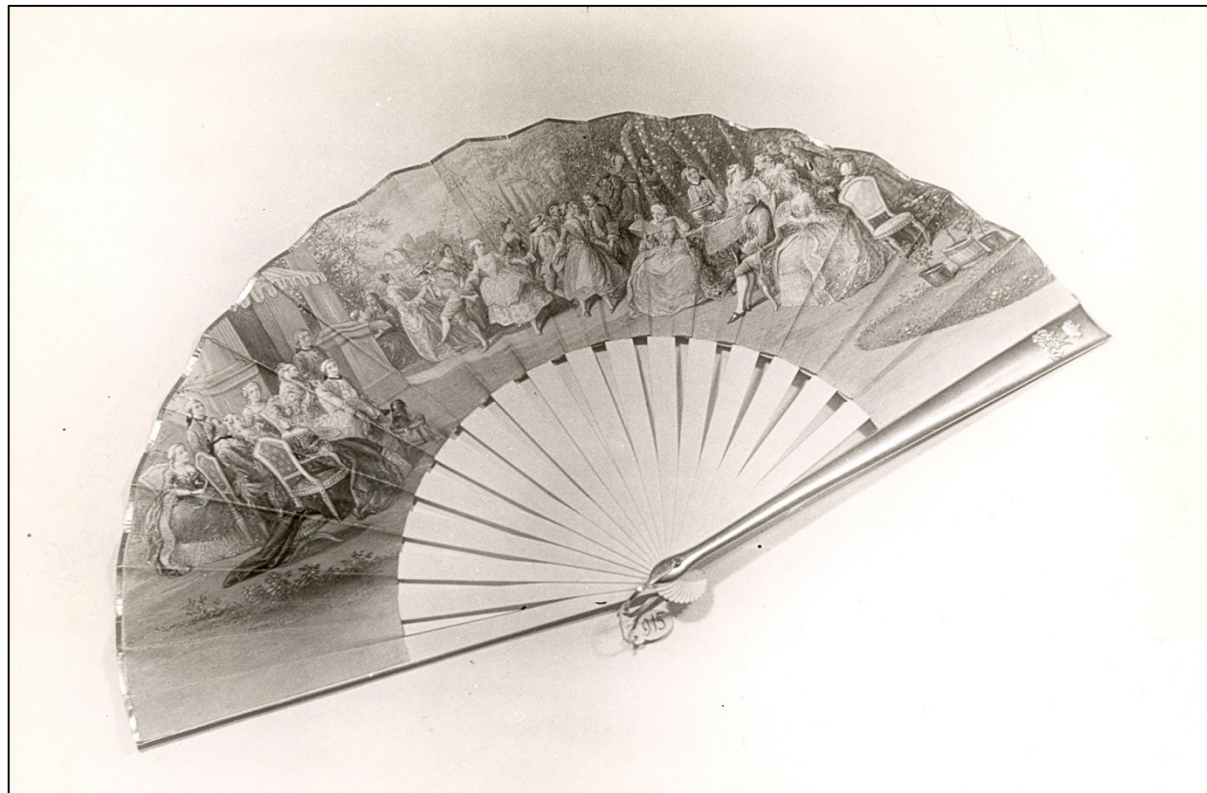


[688]

(33) Leaf artist van Liphard,  
Mikhail Perkhin Fabergé workmaster,  
recto and verso shown

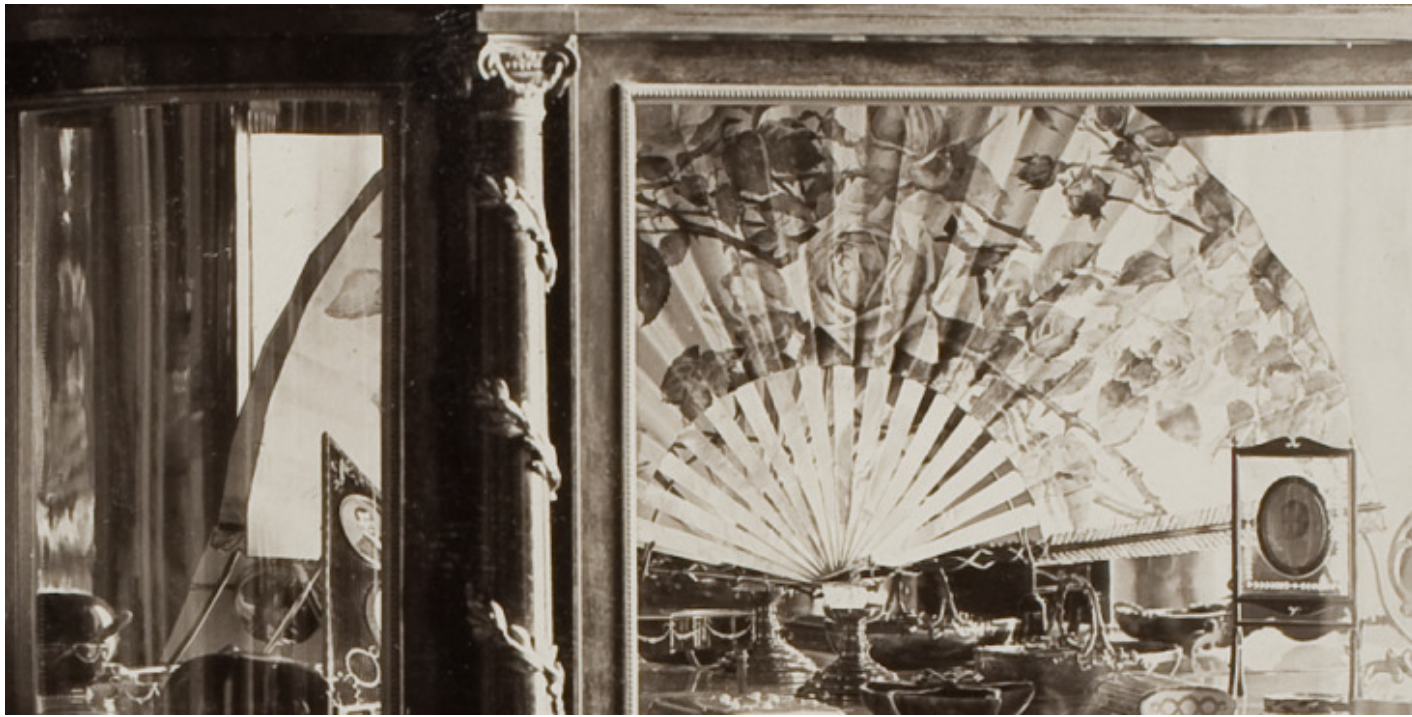


(36) Fabergé?  
(Wartski Archives)





(37) von Dervis Mansion Fabergé exhibition in 1902  
showing objects owned  
by Empresses Maria Feodorovna and Alexandra Feodorovna



(39) On a Russian website,  
subsequently disappeared

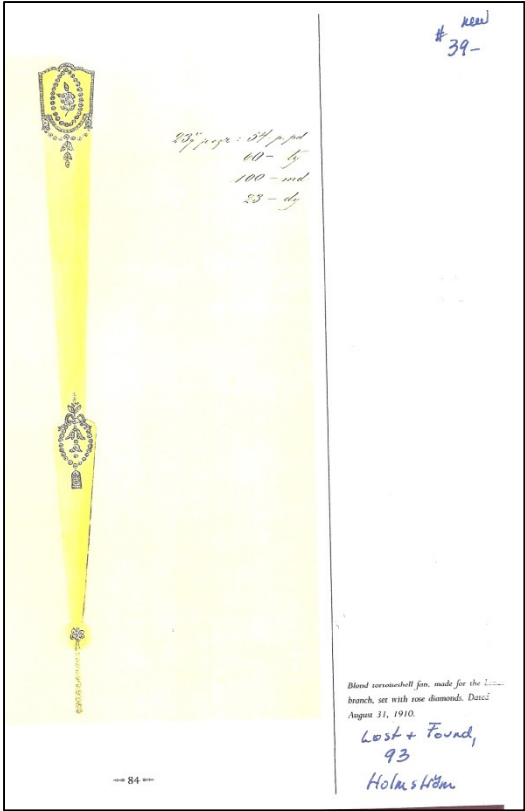


(41) Princess Schahowskoya  
(Courtesy Kathy Maxwell)





Design sketch (August 31, 1910)  
from the Albert Holmström workshop  
(Snowman, Kenneth, *Lost and Found*)



Design Sketches from Henrik Wigström, active 1903-1917  
(Tillander-Godenhielm, *Golden Years of Fabergé:  
Drawings and Objects from the Wigström Workshop*)



(24) Fan Box, initially sold as a glove [sic] box, fan is missing,  
Empress Alexandra Feodorovna's monogram, 14¾" (37.5 cm)  
Provenance: Wendell Cherry, Safra Collection, sold for \$156,000 in 2005.

